

## 2 BEDROOM

### APARTMENTS

611, 711, 811, 911, 1011, 1111, 1211,  
1311, 1411, 1511, 1611, 1706, 1806,  
1906, 2006

### INTERNAL AREA

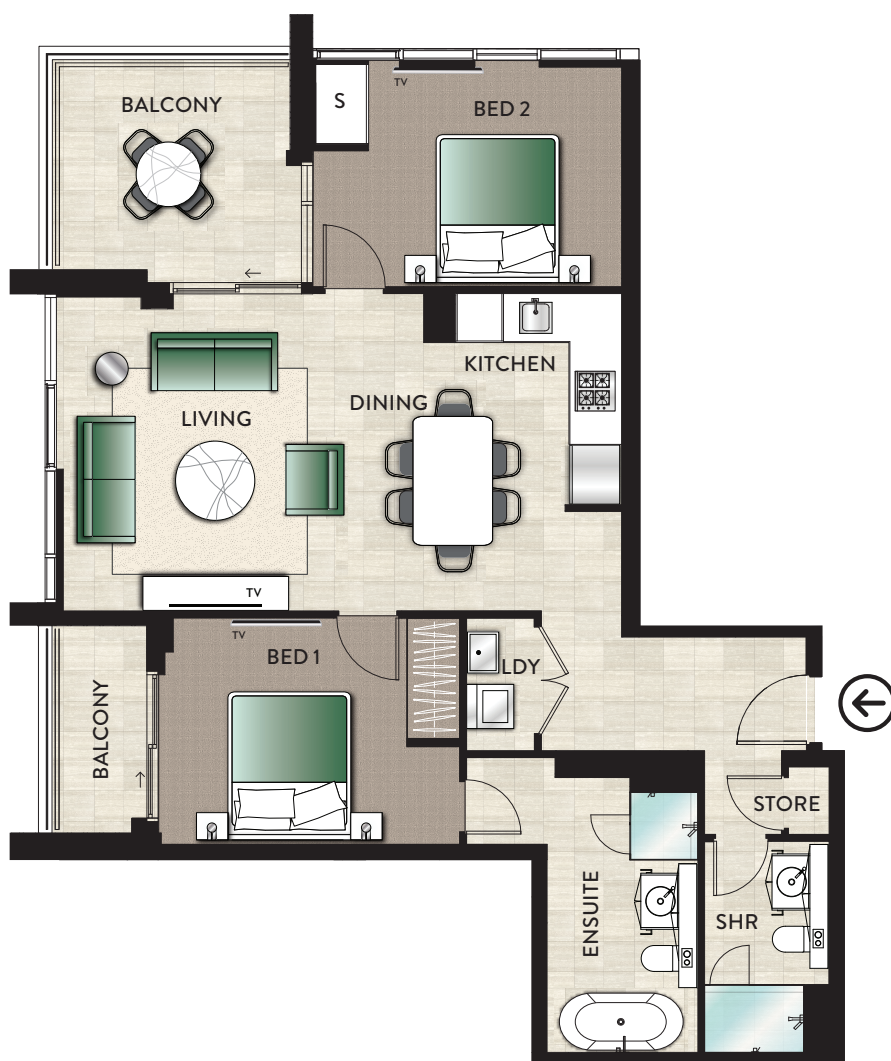
79m<sup>2</sup>

### BALCONY AREA

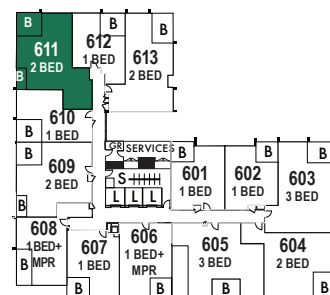
13m<sup>2</sup>

### TOTAL AREA

92m<sup>2</sup>



### BUILDING D



**DISCLAIMER:**

Purchasers take note: These floor plans do not form part of the contract for sale of any lot within the development, they are indicative only. The descriptions, layouts and areas set out in this floor plan are subject to change and may not accurately reflect the final design of each unit depicted.